

## Need Help with Work or Training needs?

Nest will continue to support Nisga'a citizens through 3 priorities for the year 2019

1. **Essential Skills**—need to determine where your skill level is at? Find out what you need to improve on to move forward with your work or training goals
2. **Foundational Skills**—renew your certificate/s
3. **Industry**—group training for communities based on need



Nisga'a  
Employment,  
Skills &  
Training

1303 Volunteer Street  
Gingolx, BC  
Phone: 250-633-2210 ext  
5153

E-mail: [francines@nisgaa.net](mailto:francines@nisgaa.net)

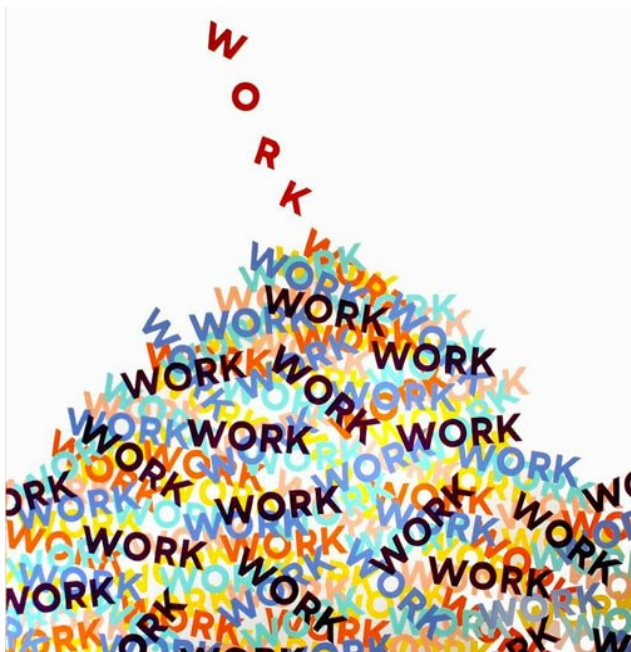
## NISGA'A PATHWAYS TO EMPLOYMENT

### 2019





## Nisga'a Pathways 2019



## Priority 1 Essential Skills

### What is TOWES

TOWES is a nationally recognized leader in the field of literacy and essential skills tools and resources.

TOWES is unlike any other literacy and essential skills assessment. TOWES uses authentic work and life content to assess an individual's ability across three skills: reading, using documents, and numeracy. Grounded in solid research, TOWES assessment results correspond to the Government of Canada's National Occupational Classification System and the Essential Skills Profiles, which directly link clients to more than 300 frontline occupations. TOWES assessments replicate real life where an individual must demonstrate their skills by solving problems or completing tasks. Our practical web-based and paper-based tools deliver valid, reliable and effective results.

### By Using TOWES:

- Employers can identify and develop the essential skills of workers and prepare them for a wide range of jobs.
- Employees, students and job seekers can identify and develop their essential skills, enabling them to make better informed career and education decisions giving them access to higher paying jobs.
- Educators and trainers can pinpoint areas of strength and weaknesses in order to develop focused intervention strategies.

<http://www.towes.com>

## Priority 2 Foundational Skills

Based on work ready clients who need that extra help with updating safety certification. Courses such as:

- Confined space
- Fall protection
- Construction Safety Training System-09
- Aerial work platform
- First aid level 1
- Fork lift

## Priority 3 Industry Training

Nisga'a Pathways will offer in-depth industry training for courses such as:

- Occupational First Aid Level 3
- Construction Craft Worker
- Class 1 driver training

**For more information contact Francine Stewart at**

**[francines@nisgaa.net](mailto:francines@nisgaa.net) or**

**250-633-2210 ext. 5153**